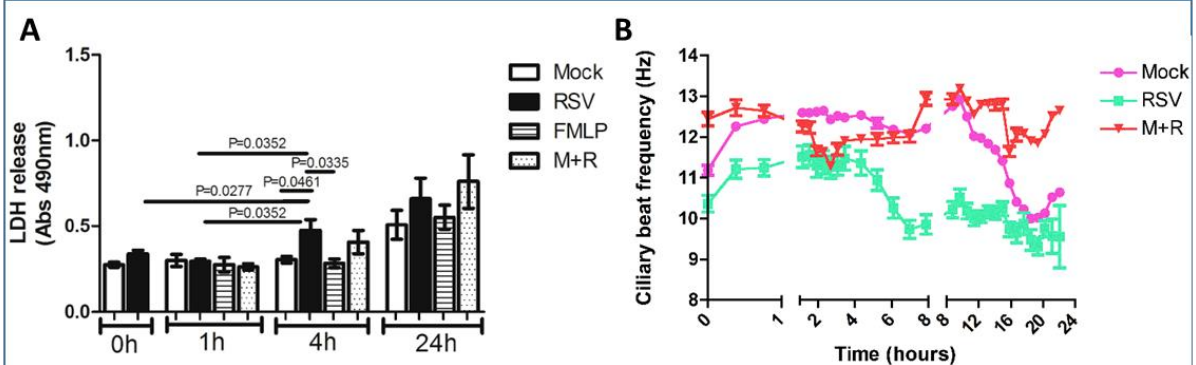


**Figure 1** **A** Time lapse fluorescence microscopy showing migration of neutrophils (red) through RSV infected epithelial cell membrane. RSV infected cells shown in green. **B** The number of migrated neutrophils adhered to ciliated airway epithelial cells following RSV infection or exposure to RSV infected supernatant (M+R) compared to mock infected controls. **C** Representative images shown with epithelial nuclei stained blue (DAPI) and neutrophils pink (DAPI + calcein orange)



**Figure 2** Damage caused to ciliated airway epithelial cells following RSV infection or exposure to RSV infected supernatant (M+R) compared to mock infected controls as measured by **A** lactate dehydrogenase (LDH) release and **B** ciliary beat frequency (CBF)